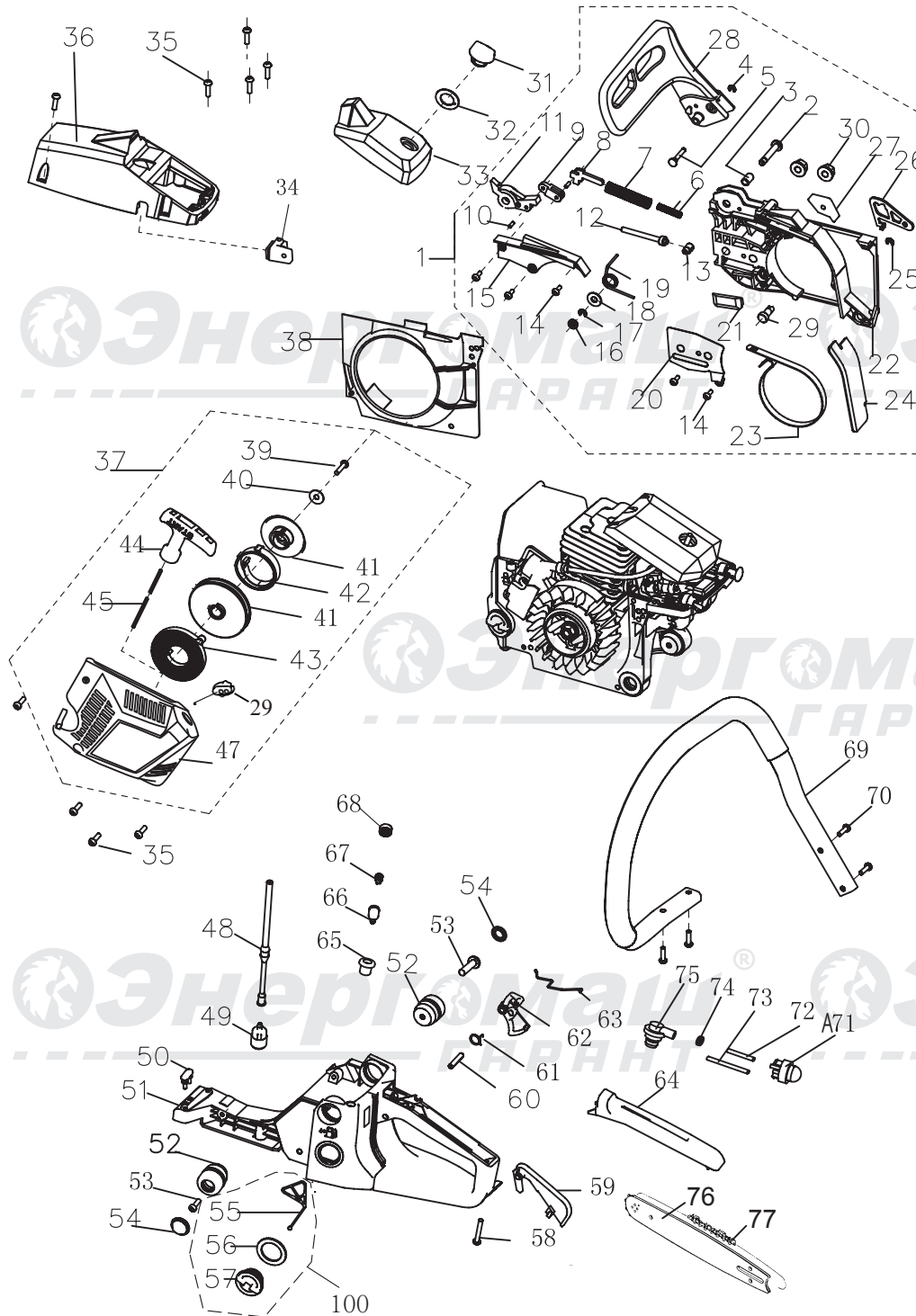


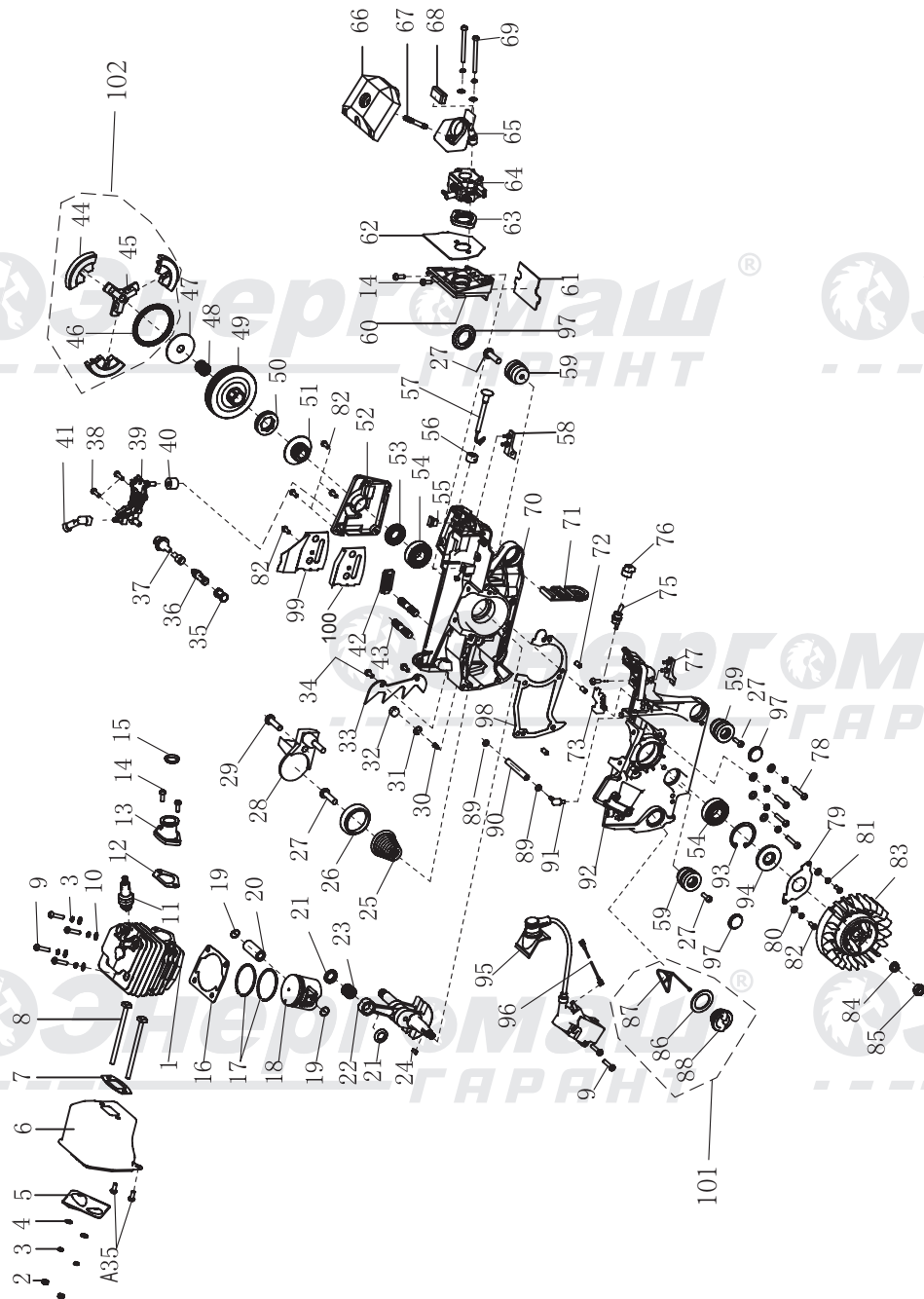
БП1-37



NO.	DESCRIPTION	NO.	DESCRIPTION
1	RIGHT COVER ASSEMBLY	40	WASHER 5
2	SHIELD PIN	41	START PLATE
3	SHIELD PIN GLAND	41	ROPE COIL PLATE
4	RING 3	42	START COIL-SPRING
5	SPACER PIN	43	RETURN COIL-SPRING
6	SECONDARY BRAKE SPRING	44	START HANDLE
7	BRAKE SPRING	45	START STRETCHING WIRE
8	BRAKE CONTROL ROD	47	START COVER
9	SECONDARY PULL-ROD	48	FUEL TUBE
10	PIN 3X9	49	PETROL FILTER COMPONENTS
11	MAIN LEVEL	50	SHOCK RUBBER
12	TIGHTENER SCREW	51	BASE
13	TENSION BLOCK	52	SHOCK RUBBER GLAND
14	TAPPING SCREW ST4X8	53	SCREW ST5X16
15	BRAKE SPRING COVER PLATE	54	DUST COVER
16	SHOCK RUBBER WASHER	55	ANTI-DROP PLATE
17	SHIELD RING 5	56	PACKING WASHING 20X30X2
18	WASHER 6	57	OIL COVER
19	BRAKE TORSION ROD SPRING	58	TAPPING SCREW ST4X25
20	TENSIONER COVER PLATE	59	TRIGGER CONTROL RACK
21	CHAIN GUIDE DOG	60	PIN6X30
22	RIGHT COVER	61	TRIGGER TORSION ROD SPRING
23	BRAKE STRAP	62	TRIGGER
24	DUST SHIELD	63	THROTTLE ROD
25	SHIELD RING 4	64	HANDLE COVER
26	SPACING SHIELD	65	BALANCER OIL TUBE
27	SHOCK RUBBER CUSHING	66	BALANCER BODY
28	FRONT DAMPER	67	BALANCER RUBBER
29	LH SHEATHING	68	BALANCER COVER
30	NUT M8	69	FRONT HANDLE ASSEMBLY
31	AIR FILTER LOCK NUT	70	TAPPING SCREW ST5X16
32	LOCK NUT WASHER 15X26X1	71	PRIMER BULB
33	AIR FILTER COVER	72	BACK FUEL TUBE
34	IDLE ADJUSTING GUIDE SET	73	FUEL PUMP TUBE
35	SCREW M5X16	74	TUBE CLIP
36	UPPER COVER PLATE	75	OIL NOZZLE
37	STARTER ASSEMBLY	76	GUIDE BAR
38	BOSSING	77	CHAIN
39	TAPPING SCREW ST4.8X13	100	OIL FILLER CAP ASSEMBLY

RU-EN20200628

БП1-37 ENGINE



NO.	DESCRIPTION	NO.	DESCRIPTION
1	CYLINDER BODY	52	COVER PLATE
2	NUT M5	53	OIL SEAL 15X28X4.5
3	WASHER 5	54	BEARING 6202 GRADE D 15X35X11
4	WASHER 5	55	SHOCK BLOCK 1
5	SILENCER COVER PLATE	56	THROTTLE LEVER RETAINING BRACKET
6	SILENCER BODY	57	THROTTLE ROD
7	SILENCER SEALING PLATE	58	RIGHT SHOCK BLOCK
8	MUFFLER CONNECTING SCREW	59	CUSHION SOCKET
9	SCREW M5X20	60	AIR INTAKE SUPPORT
10	WASHER 5	61	BACKING BOARD
11	SPARK PLUG	62	SEALING PLATE OF AIR INTAKE SUPPORT
12	AIR INTAKE TUBE SEALING PLATE	63	AIR INTAKE FLANGE
13	AIR INTAKE TUBE	64	CARBURETOR
14	SCREW M5X12	65	AIR INTAKE SOCKET
15	HOLD COIL	66	AIR FILTER
16	CYLINDER SEALING PLATE	67	DOUBLE-SCREW BOLT GM5-M5X30
17	PISTON RING	68	CUSHION OF AIR INTAKE SOCKET
18	PISTON	69	NUT M5X50
19	PISTON PIN CIRCLIP	70	RIGHT CASE BODY
20	PISTON PIN	71	DUST PLATE
21	NEEDLE BEARING RING	72	PIN 5X10
22	CRANKSHAFT CONNECTING BAR COMPONENTS	73	SHOE BLOCK 2
23	NEEDLE BEARING 11X15X12.5	75	EXTINCTION SWITCH
24	SEMICIRCULAR KEY 3X3.5X10	76	EXTINCTION SWITCH SOCKET
25	CONICAL SPREADER SPRING	77	LEFT SHOCK BLOCK
26	CONICAL SPREADER BASE	78	SCREW M5X25
27	TAPPING SCREW ST5X16	79	OIL SEAL DAMPER
28	CHAIN CATCHER	80	WASHER 4
29	SCREW M5X16	81	WASHER 4
30	AERATION JET	82	SCREW M4X10
31	AERATION JET CIRCLIP	83	FLYWHEEL
32	SPONGE TRANSITION BLOCK	84	WASHER 8
33	BUMPER SPIKES	85	NUT M8X1
34	SCREW M5X10	86	PACKING WASHING 20X30X2
35	OIL FILTER SCREEN	87	ANTI-DROP PLATE
36	OIL FILTER	88	OIL COVER
37	OIL TUBE	89	SUCTION TUBE CIRCLIP
38	SCREW M4X14	90	SUCTION TUBE 2.5X7X105
39	OIL PUMP	91	SUCTION JET
40	SPONGE TRANSITION COIL	92	LEFT CASE BODY
41	NOZZLE	93	RING35
42	CHAIN GUIDE BLOCK	94	OIL SEAL 15X35X4.5
43	DOUBLE-SCREW BOLT AYM8-M8X26-8.8	95	IGNITER
44	SHOE BLOCK	96	EXTINCTION CONDUCTOR
45	RETAINER	97	DUST COVER
46	CLUTCH EXTENSION SPRING	98	CASE BODY SEALING PLATE
47	CLUTCH ADJUSTING WASHER	99	DAMPER
48	NEEDLE BEARING 12X15X14.5	100	WASHER
49	CLUTCH SHELL	101	OIL FILLER CAP ASSEMBLY
50	SPROCKET	102	CLUTCH SPRING/BLOCK ASSEMBLY
51	TURBINE		